

<b>QLABEL-IV .....</b>	<b>1</b>
<b>PART I: ABOUT QLABEL-IV .....</b>	<b>1</b>
1: INTRODUCTION .....	1
2: INSTALLATION .....	1
<b>PART II: WORKING WITH LABELS .....</b>	<b>3</b>
3: START QLABEL-IV .....	3
4: OPENING, CREATING AND SAVING LABELS .....	5
5: INSERTING TEXT.....	8
6: INSERTING BARCODE .....	9
7: DRAWING LINES AND SHAPES .....	10
8: INSERTING MAXICODE .....	12
9: INSERTING PDF417.....	12
10: INSERTING DATAMATRIX CODE.....	13
11: INSERTING QR CODE .....	13
12: INSERTING GRAPHICS.....	14
13: USING SERIAL AND VARIABLE NUMBER .....	15
14: PRINT PREVIOUS PRINTED LABEL: .....	17
15: USING REAL TIME CLOCK.....	17
16: DATABASE CONNECTION .....	18
17. DOWNLOAD GRAPHIC, LABEL AND FONT .....	20
18: PRINTING.....	21
19: ADVANCE MENU DESCRIPTION.....	21
20: COMMAND EDIT AREA .....	21

# QLabel-IV

## Part I: About QLabel-IV

### 1: Introduction

An applied program for Windows 95/98/NT/2000/ME/XP, QLabel-IV is designed for page mode printer of EZ-1000/EZ-2000 series.

QLabel-IV helps users not only design labels, but also change the label data into an executive text file with optional extension (default .CMD extension). The executive file can be run by DOS commands such as COPY, TYPE, and PRINT etc.

To master QLabel-IV, an executive file producer, it is strongly recommended that programmers be familiar with the Programming Language in advance.

### 2: Installation

1. Under Windows 95/98/NT/2000/ME/XP simply put your CD into your computer's CD Drive and the installation will start automatically. If the AutoPlay feature has been disabled on your computer and the installation does not start automatically, simply double click on the "My Computer" icon, right click on the CD drive and choose AutoPlay.
2. The first screen displayed is the WELCOME dialog box, press Next. (refer to the Fig.2.1)

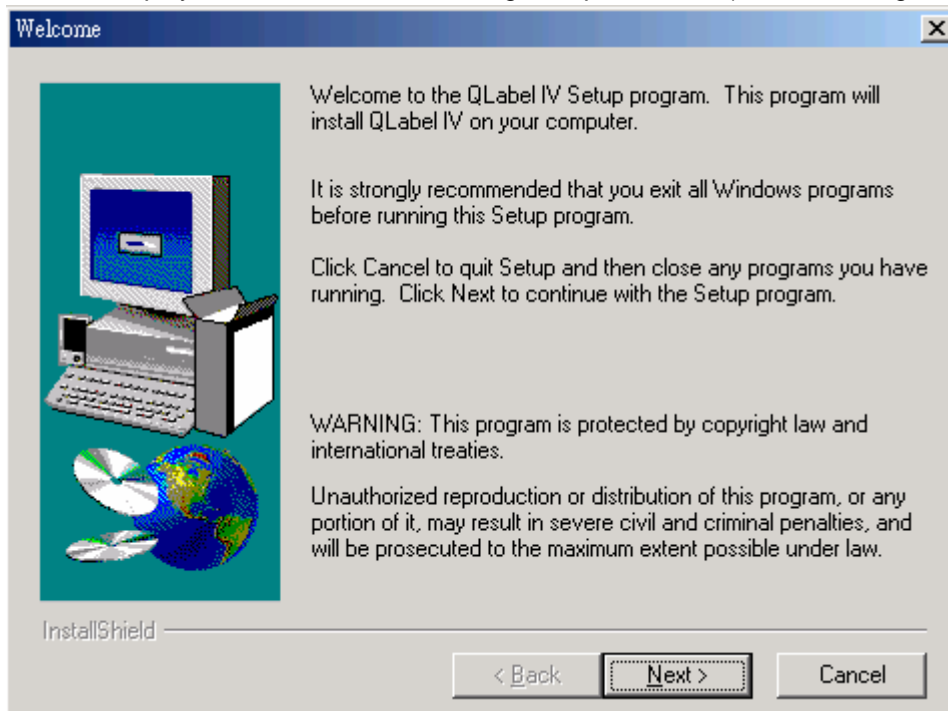


Fig.2.1

3. Select the directory that you want to use for the QLabel-IV program and related files. You can create a new directory or use one on your hard disk. If you use an established directory, specify the full path name of the directory. Type the name of the directory you want, or accept the suggested default path of C:\Program Files\Godex\QLabel IV then press NEXT. (refer to the Fig.2.2)



Fig.2.2

4. You can create a new program folder or use one on your system then press NEXT. (refer to the Fig.2.3)

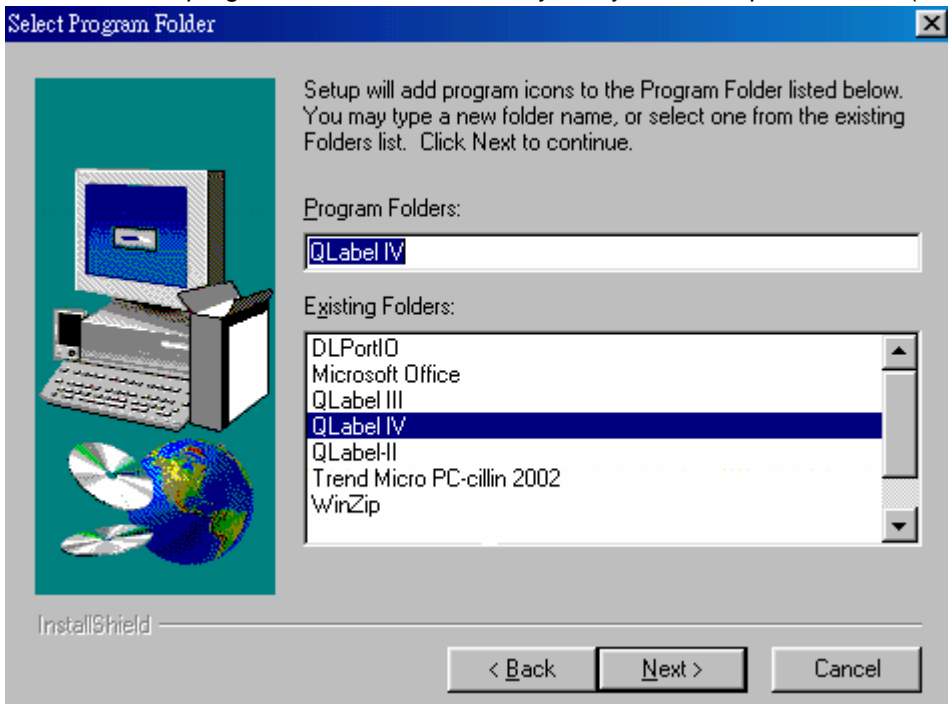


Fig.2.3

5. The Start Copying Files dialog box shows all of your setting. Please check these items. (refer to Fig.2.4)

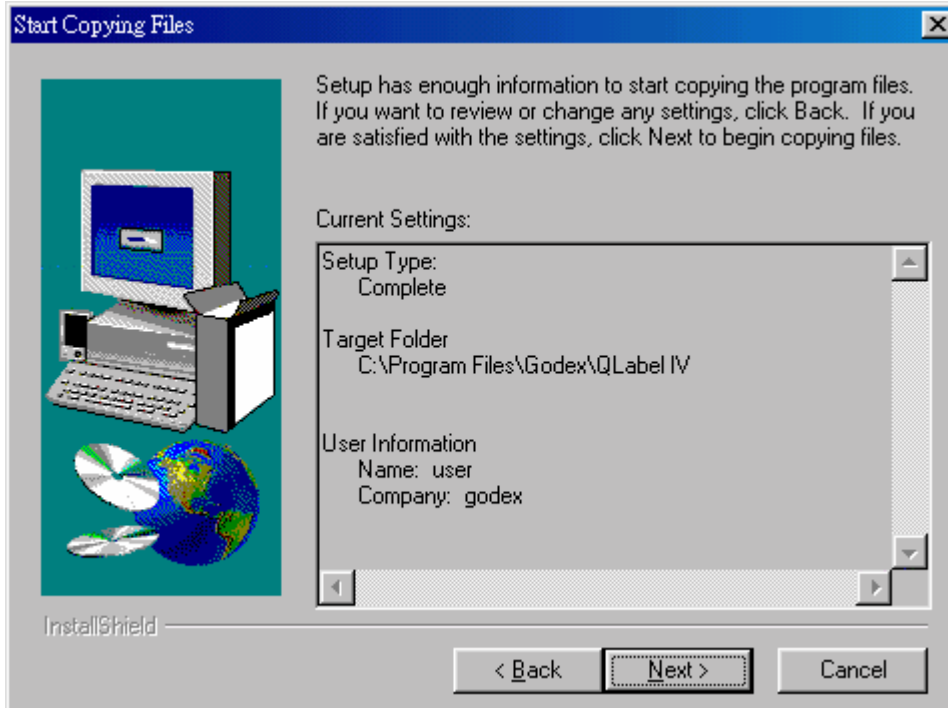


Fig.2.4

6. QLabel-IV then copies all necessary files from the QLabel-IV disks.
7. After installing the QLabel-IV program, it will display the QLabel-IV group. Close the group to end the setup program. (refer to the Fig.2.5)



Fig.2.5

## Part II: Working With Labels

### 3: Start QLabel-IV

Click Start, point to Programs, point to the QLabel-IV folder, and then click the program.

#### Working Environment

When you open or create a new label, on the screen there are two working areas. On the left side of the screen is Label Edit Area, and on the right side of the screen is the Command Edit Area (Pro version only and refer to the Fig.3.1)

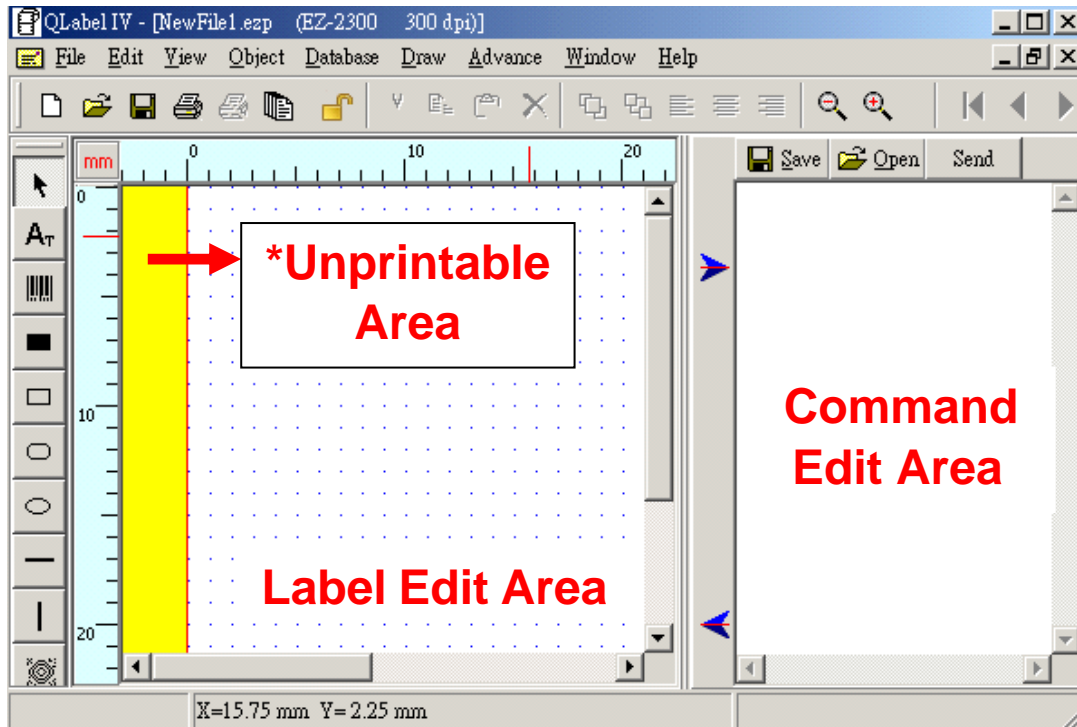


Fig.3.1

\*Unprintable Area: When select the EZ-2000 series printer, the screen will show the unprintable area (3mm) on label edit area.


## About Toolbars

Toolbars help you to use commands in QLabel-IV quickly. Items of toolbar are detailed below:

	Create a new label		Previous record
	Open an existing label		Next record
	Save active document		Go To...
	Print active label form		Re-query
	Print previous printed label		Database View/Edit
	Lock		Select object
	Cut		Create a text with printer's font
	Copy		Insert Barcode
	Paste		Draw a not hollow rectangle
	Delete		Draw a square-corner rectangle
	Move to front		Draw a round-corner rectangle
	Move to back		Draw an ellipse or circle
	Align screen left		Insert MAXICODE barcode
	Align screen center		Insert PDF417 barcode
	Align screen right		Data Matrix Code
	Zoom Out		QR Code
	Zoom In		Insert Picture
	First record		Create a text with window's font
	Last record		

## 4: Opening, Creating and Saving Labels

### Create a new label

1. On the File menu, click New.
2. To save the new file, click the File menu, click Save As, and then type a name in File name.
3. To save the new file with the text type, click built-out , click Save button in the Command Edit Area, and then type a name in File name.

### Save changes to a label

On the File menu, click Save.

- You can also save an existing label with a new name by clicking Save As and then typing a new name in File name.

### Opening a label

1. On the File menu, click Open. (refer to the Fig.4.1)
2. In Look in, click the drive that contains the label you want to open.
3. Double-click the folder that contains the label you want to open.
4. Click the label name, and then click Open.

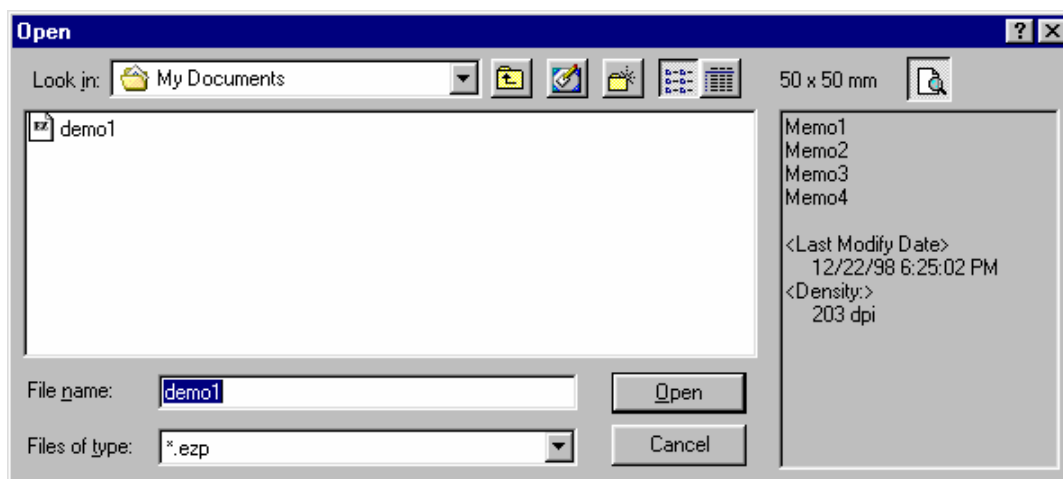


Fig.4.1

## Change the printers and printing options

1. On the File menu, click Printer Setup. (refer to the Fig.4.2)
2. Make the changes you want in the Printer Setup dialog box:
  - To change printers, click a printer in Barcode Printer.
  - To change printing options, enter the setting you want under Printing darkness, Printing speed, Copies of each label, Number of prints, Stop position and Print port.

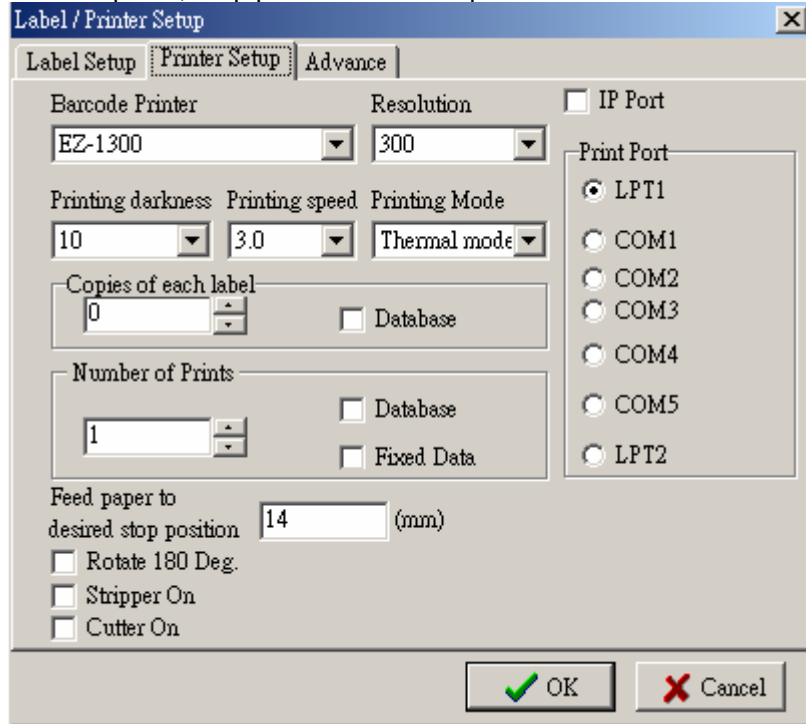


Fig.4.2

## Set the label type and size

1. On the File menu, click the Label Setup. (refer to the Fig.4.3)
2. To change Paper size, enter new values under Paper Height, Paper Width and Left Margin.
3. To change the paper type, click a type in Paper Type.

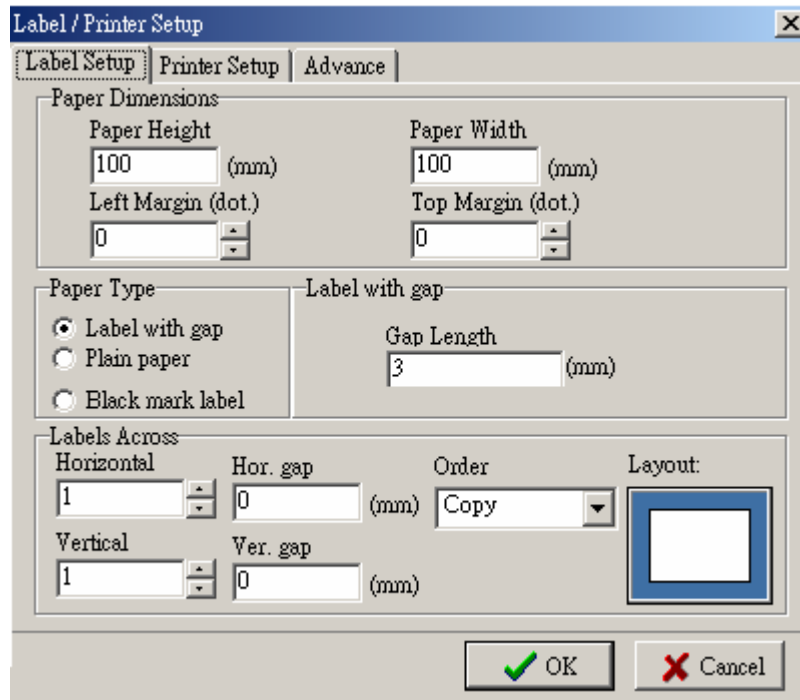


Fig.4.3

- Label paper: Check on paper with gap and set Gap Length.
- Plain paper: Check on Plain paper and set Feed paper length.
- Black mark paper: Check on Black mark label, enter new values under Black mark width and Black line to top

of form position. (refer to the Fig.4.4 、 Fig.4.5)

- Horizontal: sets the number of columns of labels on one page.
- Vertical: sets the number of rows of labels on one page.
- Horizontal gap: between the columns of labels.
- Vertical gap: between the rows of labels.
- Order: this method can collocate with serial number.

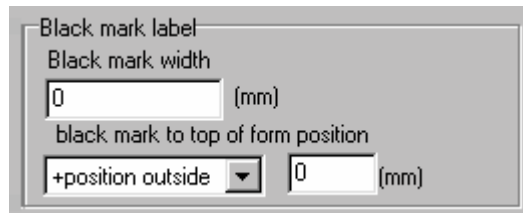


Fig.4.4

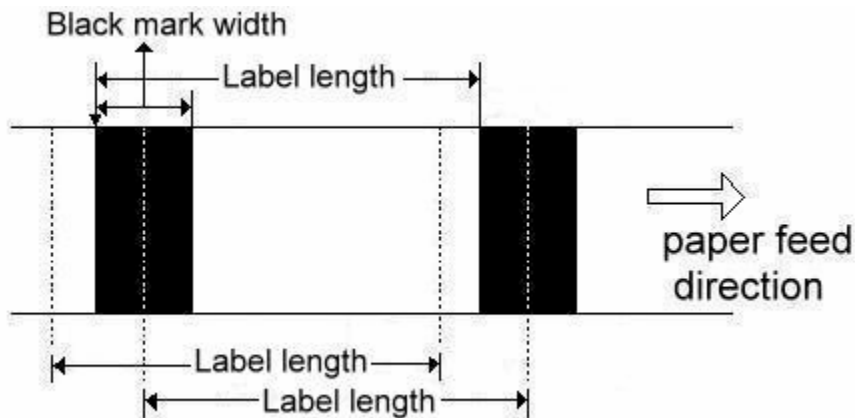


Fig.4.5

## Setting the Advance

If you want to use serial port to control printer, you must set this item. The printer's default setting: Baud Rate 9600, Parity none, Data length 8 bit, Stop bit 1. (refer to the Fig.4.6)

1. Click Printer Setup from the File menu.
2. Click the Advance table.
3. Click new setting.

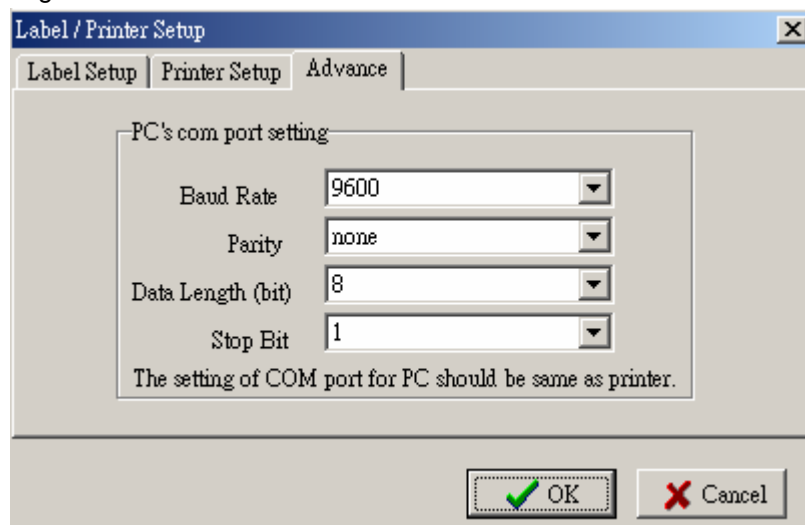


Fig.4.6



## 5: Inserting Text

### Insert a text with printer's font

1. Click **A**T.(refer to the Fig.5.1)
2. On the Text Setup dialog box, click the font type, size, rotation angle, horizontal and vertical expansion you want.
3. Typing the text into the Data table. You also could use the Load button to load the text file.

#### Note.

- Internal Font: Printer's font.
- Asian Font: you can download the Asian Font to flash memory.
- Download Font: If you already used the Download New Font function to download window's font to flash memory, you can check on the item and select font you want.

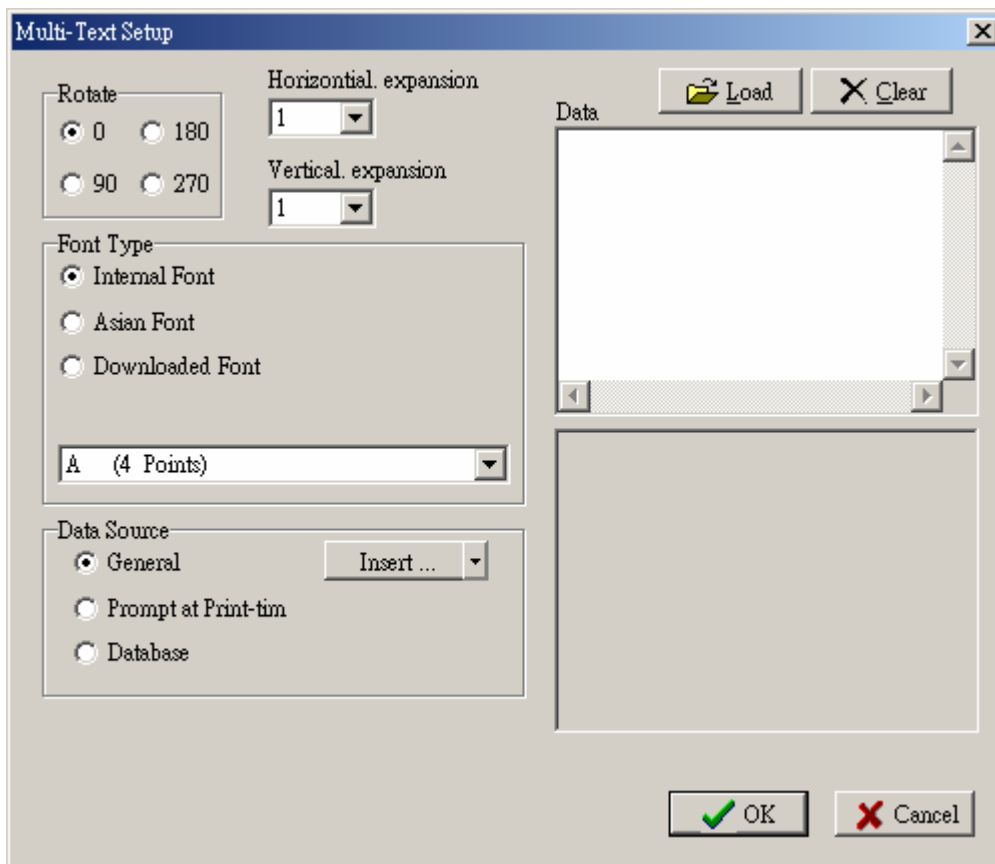



Fig.5.1

## Insert a text with Window's Font

1. Click . (refer to the Fig.5.2)
2. On the Window Text Setup dialog box, click the font and rotation angle you want.
3. Typing the text into the Text String table. If you want to transfer the text to a graphic, click Change to Graphic button.

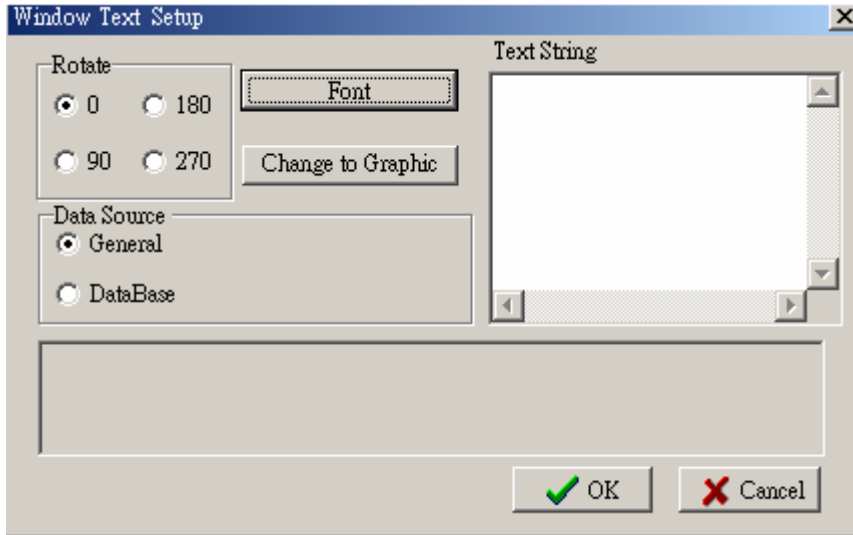



Fig.5.2

## 6: Inserting Barcode

1. Click . (refer to the Fig.6.1)
2. On the Barcode dialog box, click barcode type, rotate angle, readable, barcode wide/ narrow and height you want.
3. Type the barcode data to the Data box.

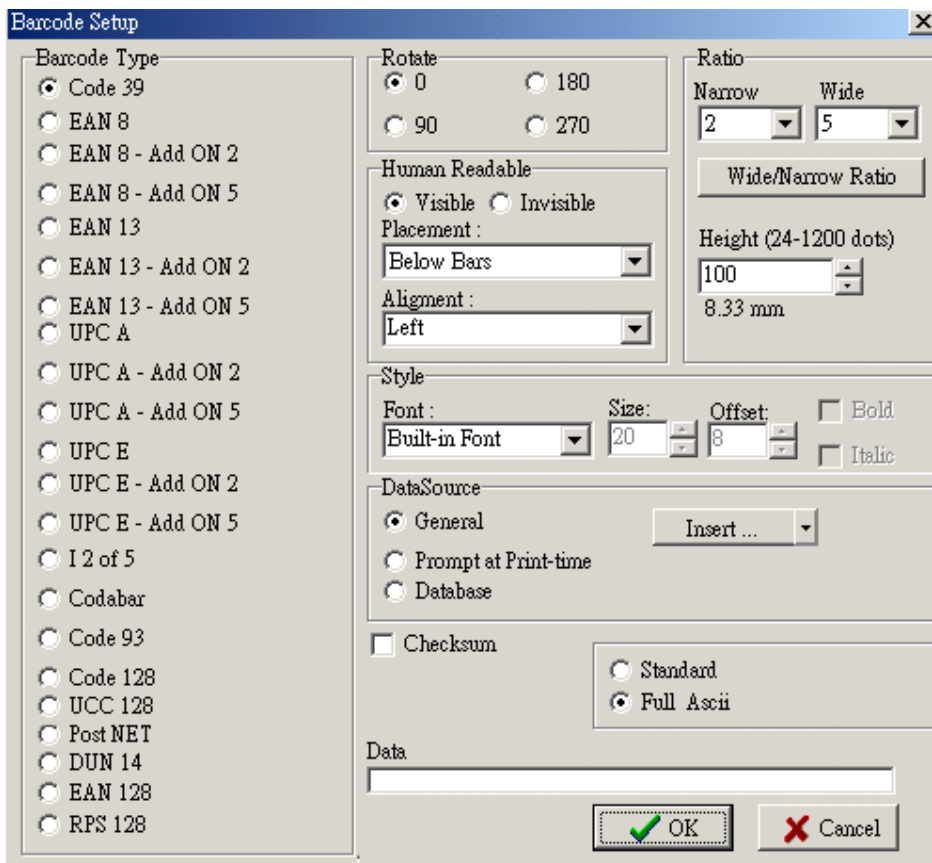



Fig.6.1

## 7: Drawing Lines and Shapes

### Drawing a straight line or box

1. Click . (refer to Fig.7.1)
2. Drag the pointer diagonally in the direction you want.
3. To change the thickness or brush style, double click the line or box, and then click you want.

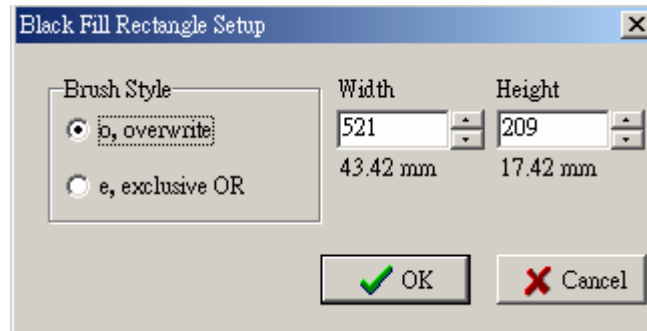



Fig.7.1

### Drawing a square-corner rectangle or square

1. Click . (refer to Fig.7.2)
2. Drag the pointer diagonally in the direction you want.
3. To change the border thickness, double click the rectangle, and then click the thickness you want in the Rectangle Setup dialog box.

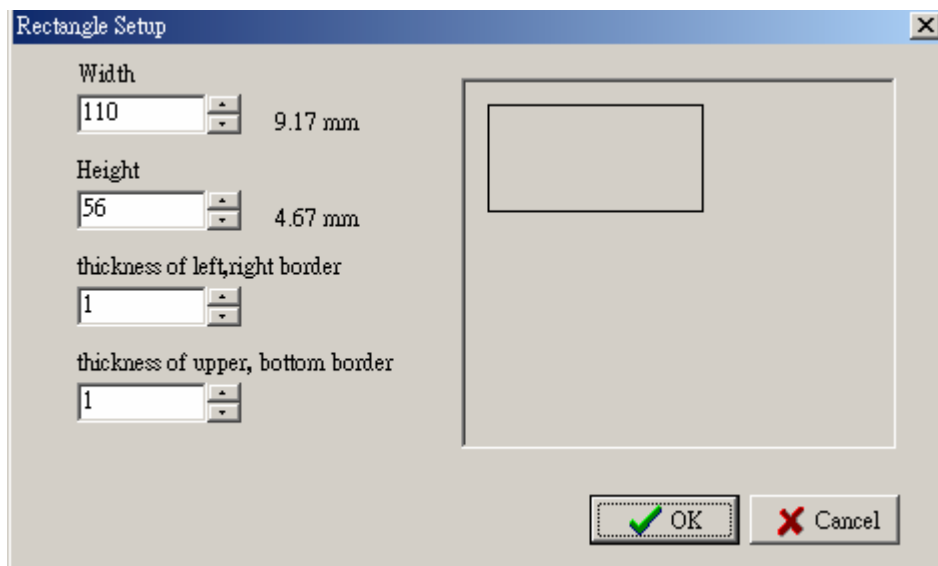



Fig.7.2

## Drawing a round-corner rectangle or square

1. Click . (refer to the Fig.7.3)
2. Drag the pointer diagonally in the direction you want.
3. To change the thickness, double click the rectangle, and then click the thickness and color you want in the Ellipse/ Rounded Rectangle Setup dialog box.

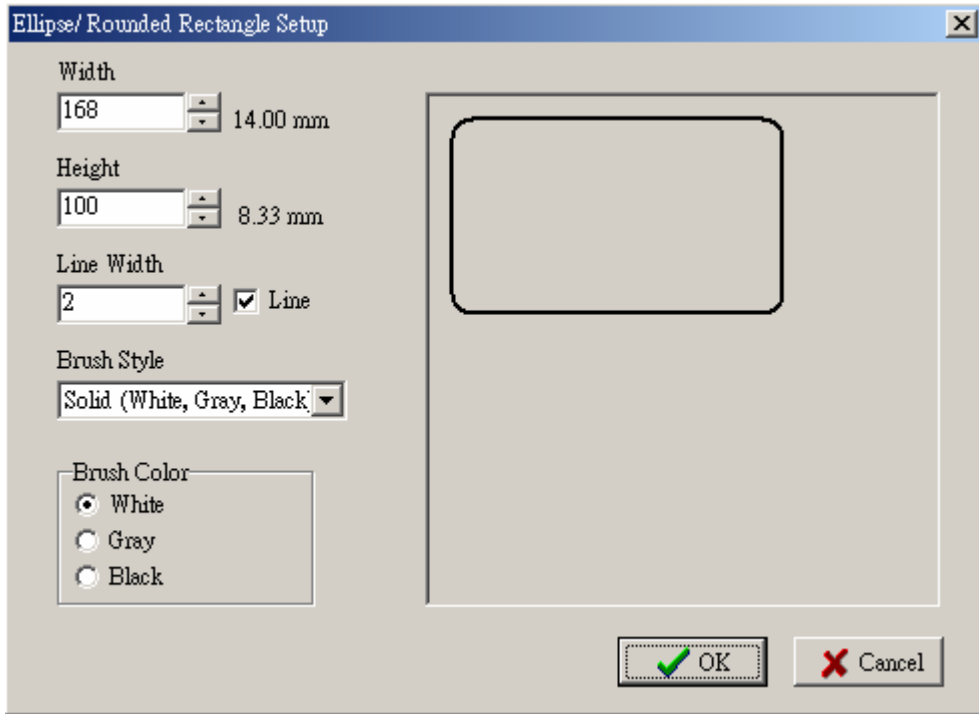

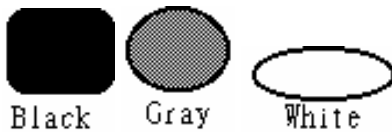


Fig.7.3


## Drawing an ellipse or circle

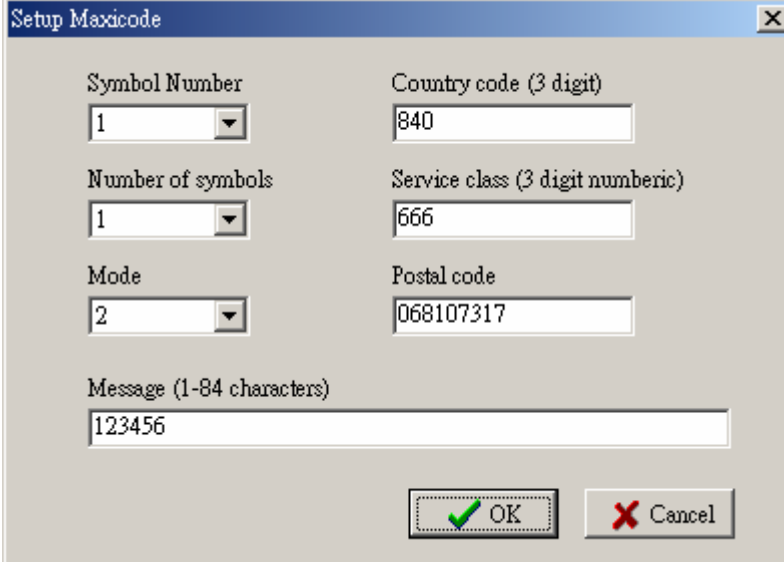
1. Click .
2. Drag the pointer diagonally in the direction you want.
3. To change the thickness, double click the rectangle, and then click the thickness and color you want in the Ellipse/ Rounded Rectangle Setup dialog box.

Brush Color:



## 8: Inserting MAXICODE

1. Click  (refer to the Fig.8.1)
2. On the MAXICODE dialog box, click symbol number, number of symbols and mode you want.
3. Type country code, service class and postal code.
4. Type the barcode data to the Message box (up to 84 characters).

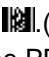


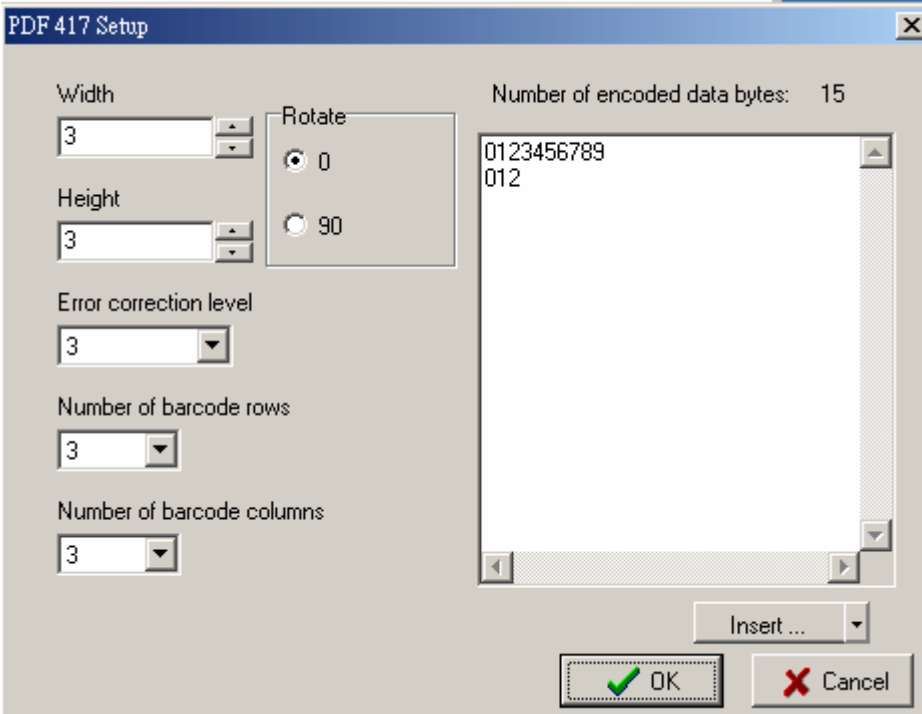
The 'Setup Maxicode' dialog box contains the following fields and controls:

- Symbol Number:** A dropdown menu with '1' selected.
- Country code (3 digit):** A text input field containing '840'.
- Number of symbols:** A dropdown menu with '1' selected.
- Service class (3 digit numeric):** A text input field containing '666'.
- Mode:** A dropdown menu with '2' selected.
- Postal code:** A text input field containing '068107317'.
- Message (1-84 characters):** A text input field containing '123456'.
- Buttons:** 'OK' (with a green checkmark) and 'Cancel' (with a red X).

Fig.8.1

## 9: Inserting PDF417

5. Click  (refer to the Fig.9.1)
6. On the PDF 417 Setup dialog box, click all the values you want.
7. Type the data on the Number of encoded data byte box.
8. Label may be rotated 0° or 90° upon selection.




The 'PDF 417 Setup' dialog box contains the following fields and controls:

- Width:** A text input field with '3' and a spinner control.
- Height:** A text input field with '3' and a spinner control.
- Rotate:** Radio buttons for '0' (selected) and '90'.
- Error correction level:** A dropdown menu with '3' selected.
- Number of barcode rows:** A dropdown menu with '3' selected.
- Number of barcode columns:** A dropdown menu with '3' selected.
- Number of encoded data bytes:** A label showing '15'.
- Message box:** A text area containing '0123456789' and '012'.
- Buttons:** 'Insert ...', 'OK' (with a green checkmark), and 'Cancel' (with a red X).

Fig.9.1

## 10: Inserting DataMatrix Code

9. Click  (refer to the Fig.10.1)
10. Type the data on the Number of encoded data box.
11. DataMatrix Code may be rotated 0° or 90° upon selection.
12. Click the values on the multiple box you want.

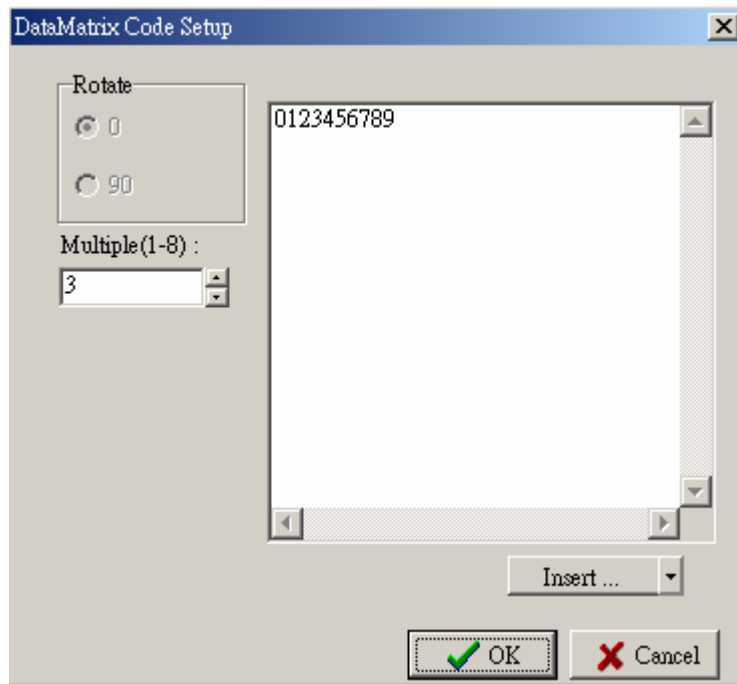



Fig.10.1

## 11: Inserting QR Code

1. Click  (refer to the Fig.11.1)
2. Type the data on the Number of encoded data box.
3. QR Code may be rotated 0° or 90° upon selection.
4. Click the values on the multiple box you want.

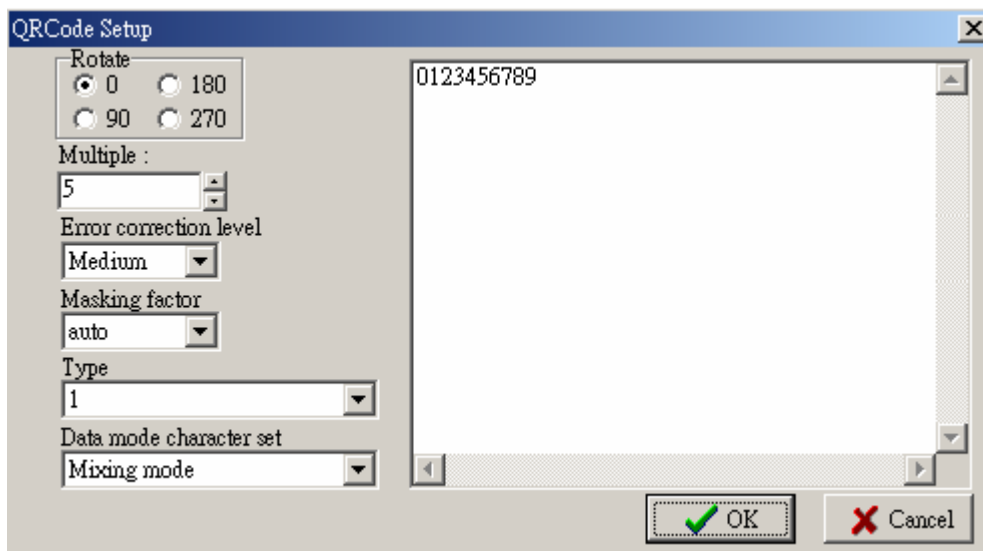



Fig.11.1

## 12: Inserting Graphics

### Insert graphics from file

1. Click  (refer to the Fig.12.1)
2. Select the halftoning you want. (None/Clustered/dispersed/Diffusion)
3. On the Graphic dialog box, click Load.
4. In Look in, click the drive that contains the graphic file you want to load.
5. Double-click the folder that contains the file you want to open.
6. Click the graphic file name, and then click Open.(refer to the Fig.12.2)
7. Click OK to load the graphic.
8. Drag the graphic where you want it.

#### Notes.

- You can download this graphic to internal or external memory. Click Graphic Download and then click download memory mode.
- You can flip rotate or inverse color (highlight) the graphic. Click Graphic operates and then click function you want.

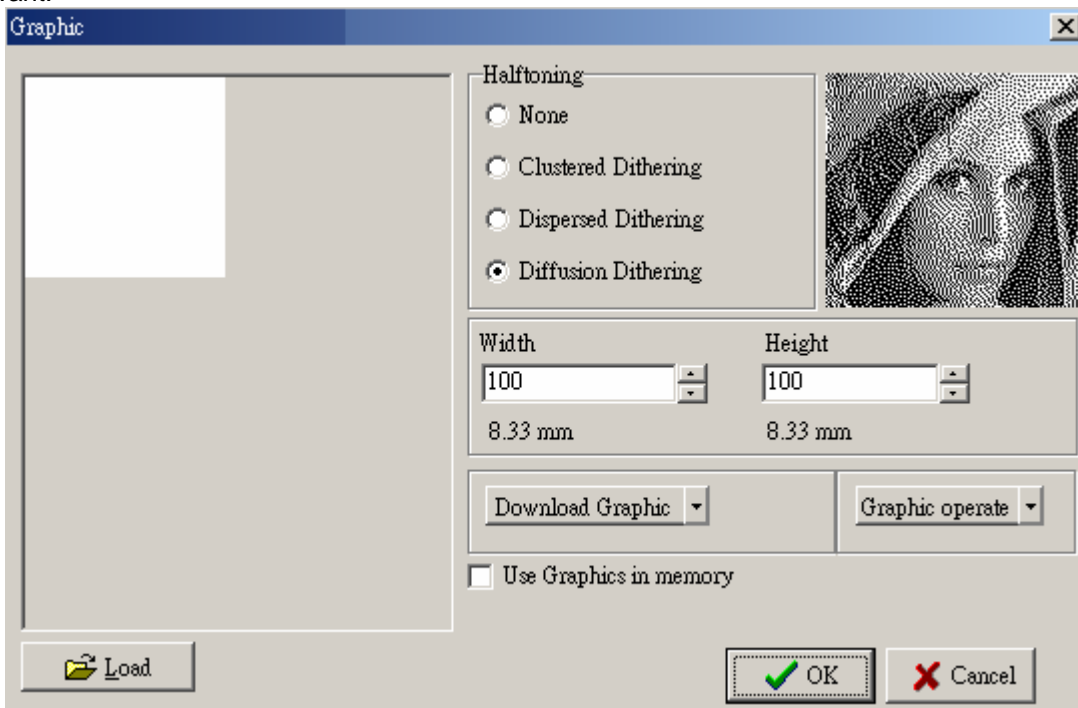


Fig.12.1

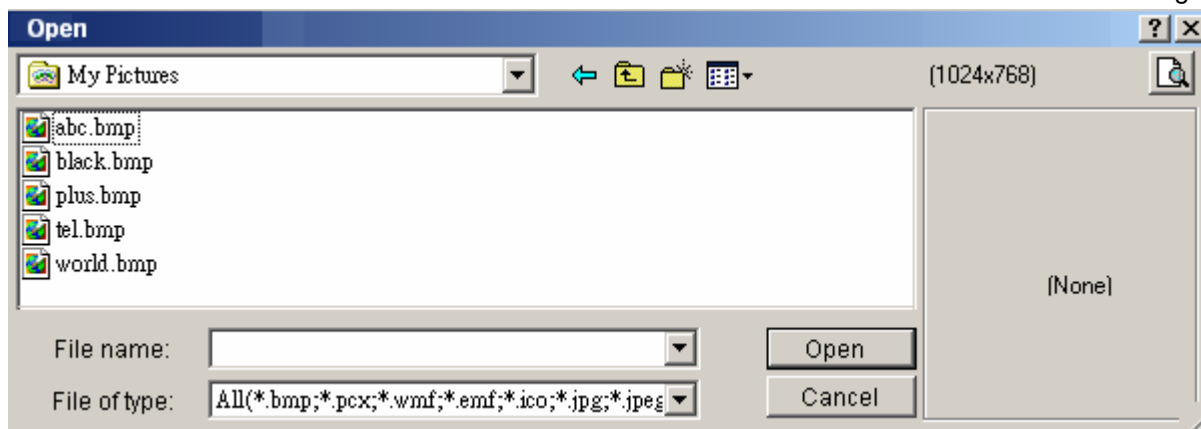



Fig.12.2

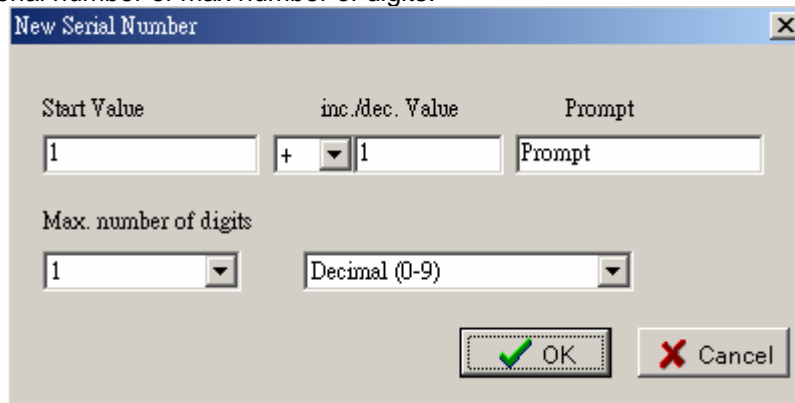
## Insert graphics from clipboard

1. Click .
2. On the Graphic dialog box, click Graphic operate, click Paste from clipboard.
3. Click OK to paste the graphic.
4. Drag the graphic where you want it.

## 13: Using Serial and Variable Number

### Insert Serial Number

1. Insert a text or barcode.(refer to Fig.13.1)
2. Double click the object.
3. On the Data source, click Insert, point to Serial, and then click New Serial.
4. On the New Serial dialog box, enter the value you want and then click OK.
  - For example: Start value = 1000, Increase value = 1, Prompt = S/N. The print out number is 0001, 0002, 0003, 0004 etc.
5. Setting the serial number of max number of digits.



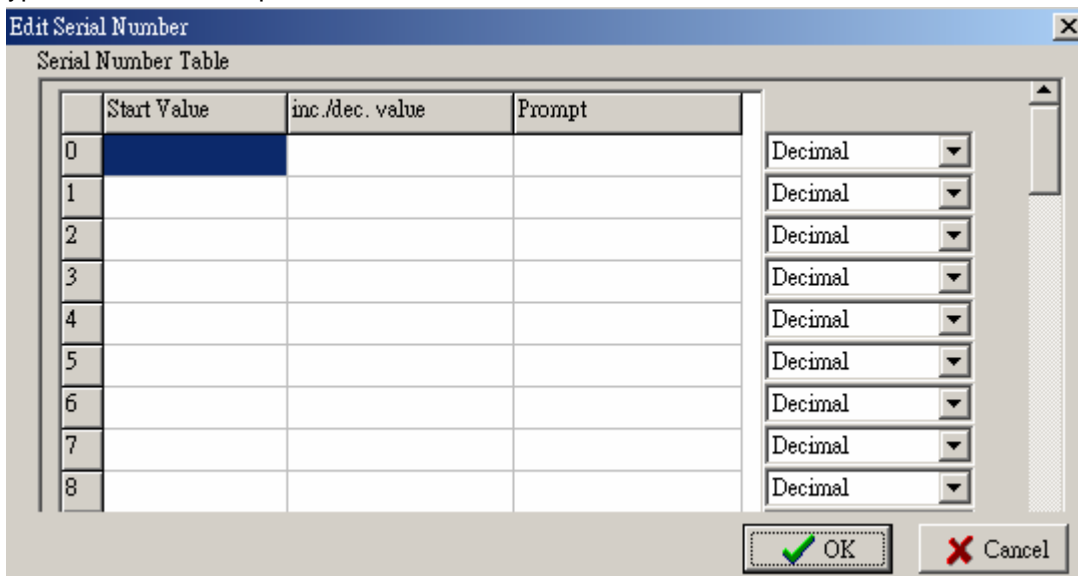
The 'New Serial Number' dialog box contains the following fields and controls:

- Start Value:** Text input field containing '1'.
- inc./dec. Value:** A dropdown menu with a '+' sign and a text input field containing '1'.
- Prompt:** Text input field containing 'Prompt'.
- Max. number of digits:** A dropdown menu containing '1'.
- Decimal (0-9):** A dropdown menu containing 'Decimal (0-9)'.
- Buttons:** 'OK' (with a green checkmark) and 'Cancel' (with a red X).

Fig.13.1

### Edit Existing Serial Number

1. Double click the object that you want to edit. (refer to Fig.13.2)
2. On the Data source, click Insert, point to Serial, and then click Edit Serial.
3. On the Edit Serial dialog box, click item you want to edit.
4. Click the item again, the data will be highlighted.
5. Type new values then press enter.



The 'Edit Serial Number' dialog box features a table and several dropdown menus:

	Start Value	inc./dec. value	Prompt
0			
1			
2			
3			
4			
5			
6			
7			
8			

Below the table, there are eight dropdown menus, each set to 'Decimal'. At the bottom are 'OK' and 'Cancel' buttons.

Fig.13.2



## Insert Variable

1. Insert a text or barcode. (refer to the Fig.13.3)
2. Double click the object.
3. On the Data source, click Insert, point to Variable, and then click New Variable.
4. On the New Variable dialog box, enter value you want and then click OK.

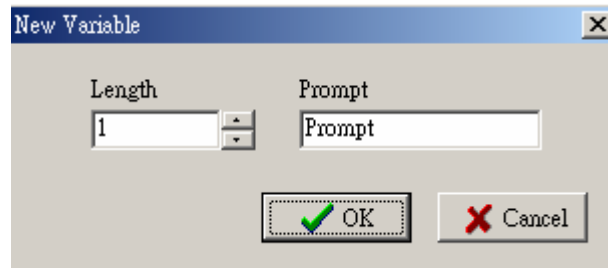


Fig.13.3

## Edit Existing Variable

1. Double click the object that you want to edit. (refer to the Fig.13.4)
2. On the Data source, click Insert, point to Serial, and then click Edit Serial.
3. On the Edit Serial dialog box, click item you want to edit.
4. Click the item again, the data will be highlight.
5. Type new values then press enter.

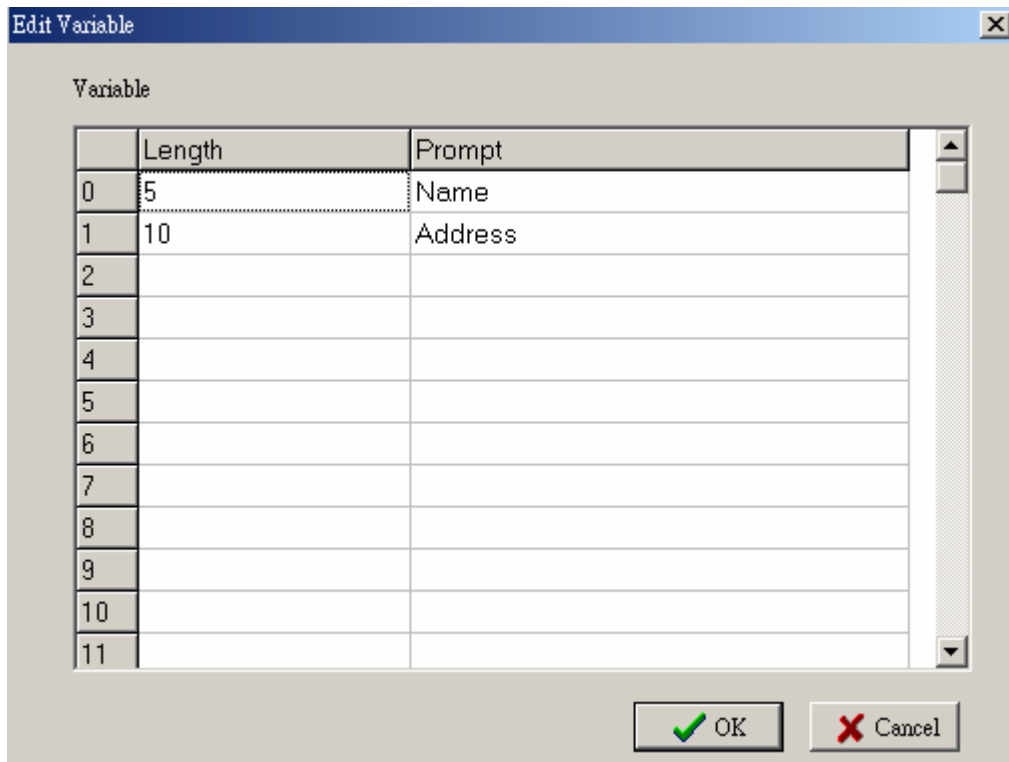



Fig.13.4

## 14: Print Previous printed Label:

1. Click 
2. Input quantity to print you wants. (refer to the Fig.14.1)

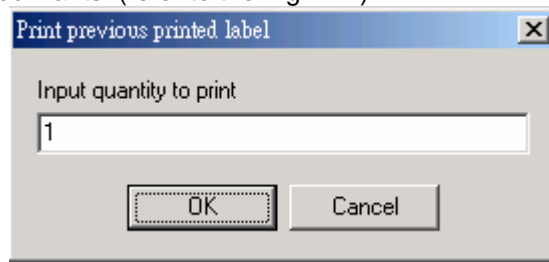


Fig.14.1

### Note:

- If label has serial number, you can use this method to keep on printing.

## 15: Using Real Time Clock

1. On the Advance menu, click Printer Date/Time Setup. (refer to the Fig.15.1)
2. On the Date/Time Setup dialog box, click Year and Month type.
3. On the Real-Time Clock Setup, setting the new date and time.
4. Click Send Setup Command button to send new setting to printer (before sending new date and time to printer, ready your printer. The printer's Ready LED must in green light).
5. Click Insert Year, Insert Month or Insert Day to set the data output style. You can click Reset to clear original setting.
6. Click OK to close the Date/Time Setup dialog box.
7. Double click the text object.
8. On the Text Setup dialog box, click insert, point to Date or Time to insert.

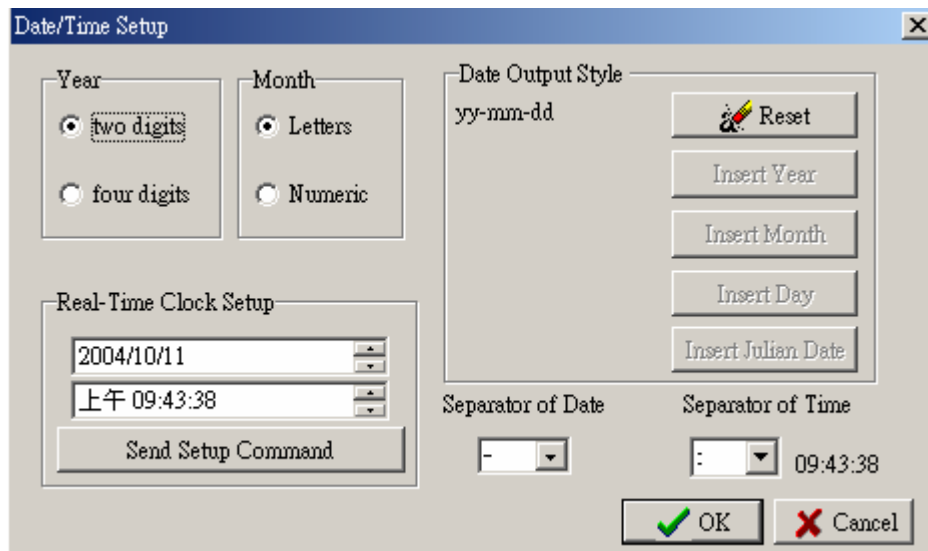



Fig.15.1

## 16: Database Connection

The benefit of database connectivity is to use the existing database in label format like Excel, Access, dBase file. And we don't need to do the duplicate work of keying all the data again. After connecting with database, the printing has to be operated through print icon . If click the "Send" button in command edit area, the printer will print the single data only displayed on the screen.

### Use DBF file connection

1. On the Database menu, click Open DBF file. (refer to Fig.16.1)
2. Click the Files of type you want.
3. In Look in, click the drive that contains the database file you want to open.
4. Double-click the folder that contains the file you want to open.
5. Click the file name, and then click Open.

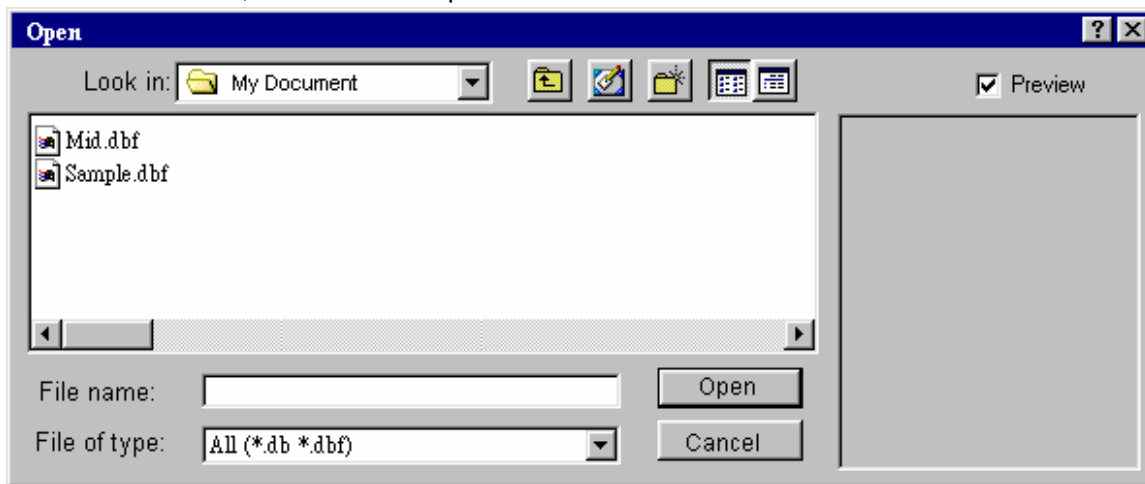


Fig.16.1

### Note.

- If the connection is done, the screen will show Database connect OK.
- If you could not connect the database file, may be the file is damaged.

### Use ODBC Connection

1. On the Database menu, click ODBC Connect. (refer to Fig.16.2)
2. Click the Database Type and Table name you want.

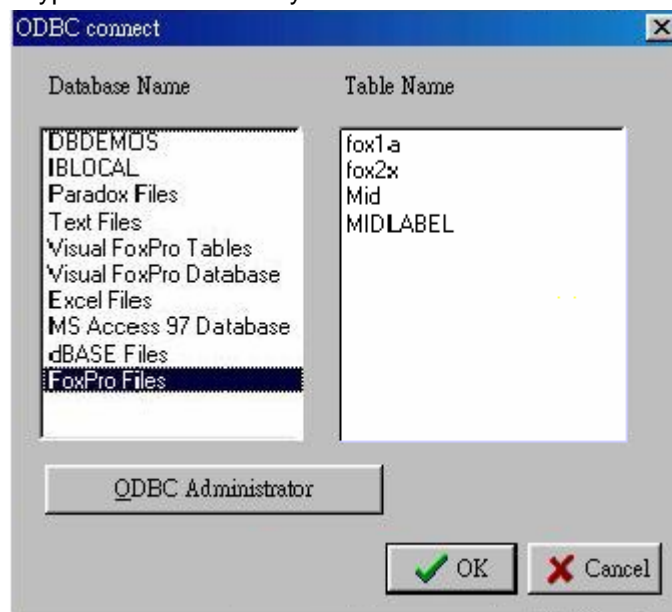


Fig.16.2

**Note.**

- Before you use the ODBC Connect function, you should use Windows Control Panel to install the new ODBC driver. The ODBC driver is the appended to application software that you use (such as FoxPro, Access and more). When you install the ODBC driver, you must define one or multiple data source.
- Regarding the installation of ODBC driver and definition of data source, please refer to the ODBC Help from your Windows.
- When the Database Login shows on the screen, you can enter your database file's user name and password or just click OK. (refer to the Fig.16.3)

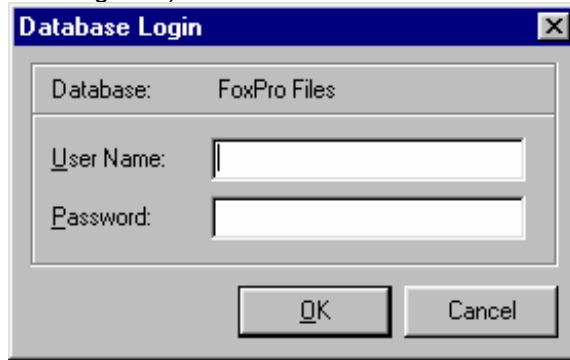


Fig.16.3

**Database operation**

1. Double click a text or 1D barcode.
2. On the Data Source, check on Database and click Insert Field.
3. Click Field you want and then click OK. (refer to the Fig.16.4)

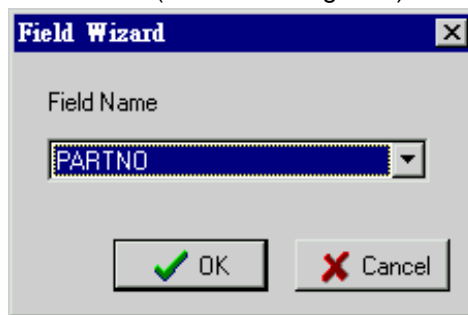


Fig.16.4

## 17. Download Graphic, Label and Font

### Download Graphic to External Flash memory

1. On the Advance-Download menu, click Graphic, click To External Flash Memory.
2. In Look in, click the drive that contains the graphic file you want to download.
3. Double-click the folder that contains the file you want to open.
4. Click the graphic file name, and then click Open.

### Download Label

#### To Printer

1. On the Advance-Download menu, click Label, click To Printer.
2. Enter the label name you wish and then click OK.

### Download Font

1. On the Advance-Download menu, click Font, click to External Flash Memory. (refer to the Fig.17.1)
2. Click Font, Style, Size and Effects you want.

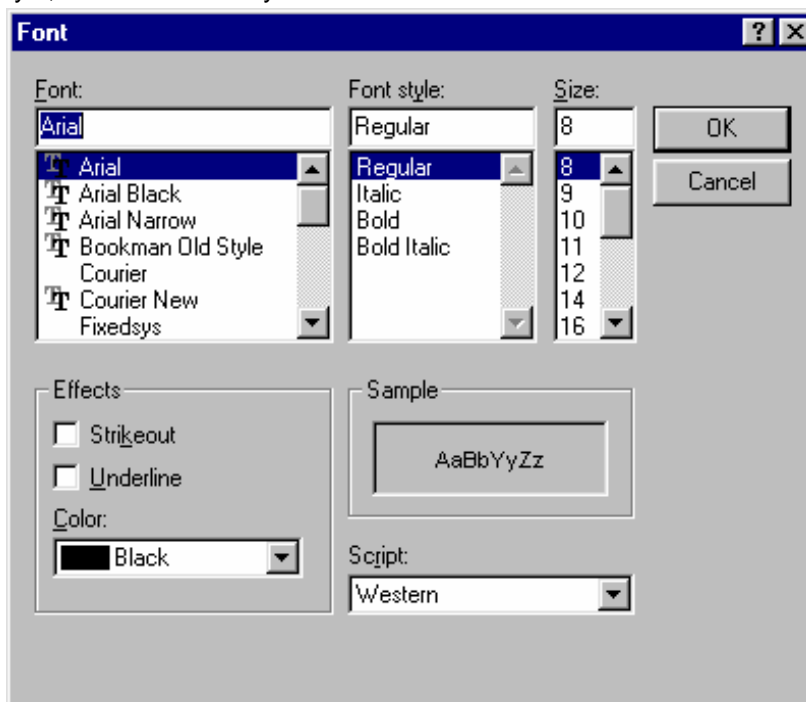


Fig.17.1

3. Click Font ID, and then click OK. (refer to the Fig.17.2)

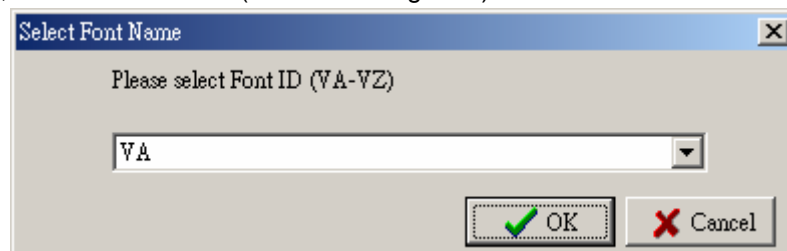


Fig.17.2

## 18: Printing

On the File menu, click Print (or click ).

## 19: Advance Menu Description

### Control:

Clear memory:	Erase printer's flash memory.
Display memory:	Display external memory's free spaces and name of the fonts, graphics and formats.
Print Head test:	This command will print a pattern for the user to determine if the print head is damaged.
Print Version message:	Print firmware version.
Reset Printer:	Reset the printer. The LED will flash once.
Unit of Measurement	Select the unit of measurement on label edits area. ( Default : mm)
Undo/ Redo	Enabled this function can back last step on label edits area. (Default: Disabled)

### Download:

Graphics:	Download graphic files to external flash memory.
Label:	Download label to flash memory.
Font:	Download Window's font to external flash memory.
Command Files:	Download command file (text type) to flash memory.

**Language: Switch the language you use.**


**Printer Date/Time Setup: Setup the printer's date and time.**

**Print Previous Printer Label: Repeatedly prints the indicated copies of last label format.**

**Label Information: To note the label information.**

**Printer Option List: To setup options of the printer.**

## 20: Command Edit Area

When you create a label in the Label Edit Area, you can click  to show the commands in the Command Edit Area. On this area, you can save commands as a text file or send the commands to the printer. You also can open an existing file by click Open.